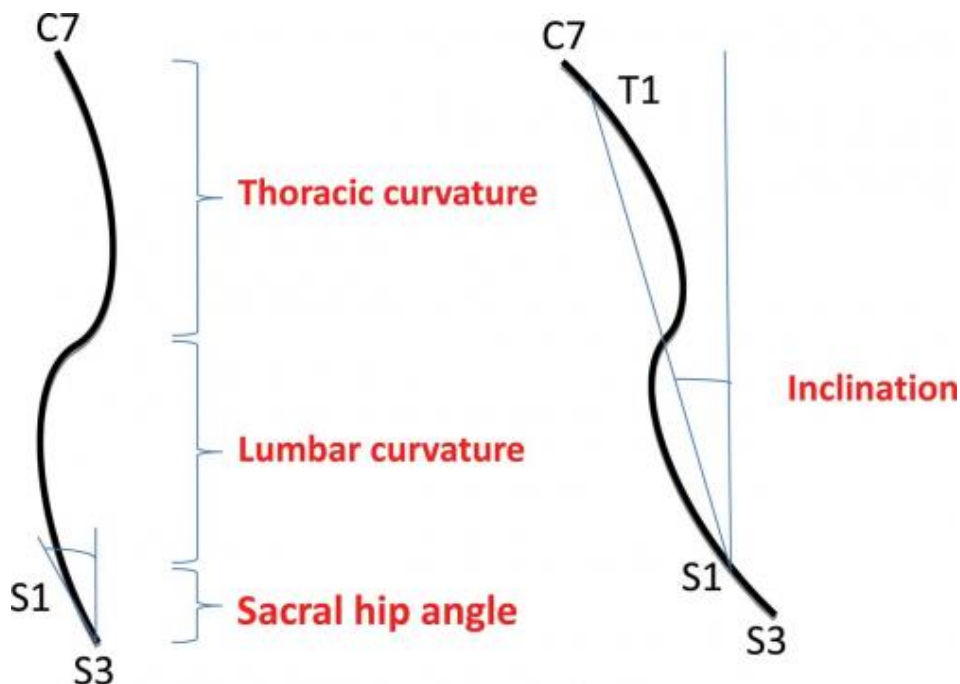


Posture provides clue for future disability



A team of researchers based in Japan discovered that the trunk angle of inclination -- the angle between the true vertical and a straight line from the first thoracic vertebra -- is associated with becoming dependent on help for activities of daily living (ADL). The subjects in the highest quartiles, who had the greatest angle of spinal inclination, were 3.47 times more likely to become dependent in ADL than those in the lowest quartiles (the group with the least spinal inclination), even after adjusting covariates such as age, sex, back pain, and stiffness. Credit: *Journals of Gerontology Series A: Biological Sciences and Medical Sciences*

The shape of an individual's spinal column may predict his or her risk for nursing home admission or need of home assistance in old age, according to a new article published online in the *Journals of Gerontology Series A: Biological Sciences and Medical Sciences*.

A team of researchers based in Japan discovered that the trunk angle of inclination -- the angle between the true vertical and a [straight line](#) from the first thoracic vertebra to the first sacral vertebra -- is associated with becoming dependent on help for activities of daily living (ADL). These activities include such basic self-care tasks as bathing, feeding, toileting, maintaining continence, dressing, and transferring in or out of a bed or chair.

"Spinal [posture](#) changes with age, but accumulated evidence shows that good spinal posture is important in allowed the aged to maintain independent lives," the authors state.

The research team's data were sourced from 804 participants in the Kurabuchi Study, a community-based [prospective cohort study](#) of residents aged 65 years or older in Kurabuchi Town, approximately 62 miles (100 kilometers) north of Tokyo.

The [test subjects'](#) spinal posture was measured with a spinal mouse, which is a computer-assisted noninvasive device for measuring spinal shape. The device is guided along the midline of the spine, starting at the spinous process and finishing at the top of the anal crease.

Of the four spinal measurements taken by the device, only trunk angle of inclination was associated with future dependence in ADL -- defined by the researchers as either admission to a nursing home or need of

home assistance after a 4.5 year follow-up period. At that time, 15.7 percent became dependent in ADL, 7.6 percent died, and 0.7 percent moved out of the town. The group was 58 percent female.

The subjects in the highest quartiles, who had the greatest angle of spinal inclination, were 3.47 times more likely to become dependent in ADL than those in the lowest quartiles (the group with the least spinal inclination), even after adjusting covariates such as age, sex, back pain, and stiffness.

The authors' research was supported by a grant in aid from the Japanese Ministry of Health, Labor, and Welfare. The article in which their work appeared is titled "[Spinal Posture in the Sagittal Plane Is Associated with Future Dependence in Activities of Daily Living: A Community-Based Cohort Study of Older Adults in Japan.](#)"

Provided by The Gerontological Society of America

This document is subject to copyright. Apart from any fair dealing for the purpose of private study, research, no part may be reproduced without the written permission. The content is provided for information purposes only.